



Lunch and Learn

Introduction to the M-CAAP: PSB

September 27, 2022

Phil Rich, Ed.D., LICSW
www.philrich.net





Our mission is to ensure that children and adolescents with problematic sexual behaviors live healthy, safe, and productive lives



Introduction to the Massachusetts Child and Adolescent Assessment Protocol (M-CAAP)



Learning Objectives

- The purpose of and rationale for the M-CAAP
- The content and structure of the M-CAAP
- The process of using the M-CAAP in completing ASAP evaluations for Massachusetts DCF

Assessment for Safe and Appropriate Placement: Legislative Mandate



An ASAP is required by MGL 119 Section 33B for youth in care and/or custody of DCF who have been:

- Adjudicated delinquent for a sexual offense or the commission of arson.
- or
- Admitted to such behavior or the subject of a documented or substantiated report of such behavior.
- and
- Who are being initially placed into foster care, a family homecare setting, or a community group home setting or residential school.
- Youth are also appropriate for an ASAP who are currently in a foster home, group home, or independent living program and who exhibit sexually harmful and/or fire setting behaviors that were not previously known to DCF.

Assessment for Safe and Appropriate Placement: Legislative Mandate



- Chapter 119, Section 33B, 1997 addressing placement in family home care of a juvenile who has or may have committed a sexual offense or arson.
- Must refer youth for an ASAP assessment.
- Evaluation must be completed within 10 working days from receipt of referral.
- Evaluation must be completed by a qualified diagnostician who possesses specialized training and experience in the evaluation and treatment of young people who have engaged in sexually abusive behavior or arson.
- Agency responsible for placing the child shall prepare and implement a plan to address the safety of the young person and young people in the home or residence, and to address the safety of children and other young people in the immediate neighborhood.



Brief History: The ASAP and M-CAAP

- The initial ASAP report format provided the framework for only a basic assessment, but was limited in its scope, depth, and number of evaluation questions.
- It provided no guidance with respect to report expectations or to help ensure consistency across evaluators.
- The M-CAAP is a best practices model, providing an evidence-based approach to the assessment of sexual risk in children and adolescents.
- The M-CAAP is comprehensive and detailed, and provides clear guidelines to evaluators regarding content and other information related to each section of the report.
- It is available as an interactive document that can be downloaded for use.



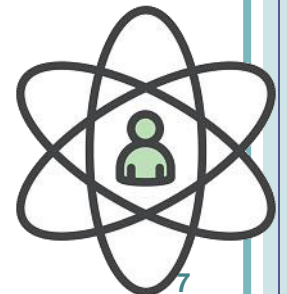
Brief History: The ASAP and M-CAAP

- The ASAP format required updating in language and concepts in order to ensure it kept pace with developing research and practice.
- The M-CAAP reflects terminology and concepts that embody the contemporary model of assessment and treatment.



M-CAAP and the Comprehensive Assessment of Risks and Needs

- “There is a consensus in the field that assessment of risk in juvenile offenders should include a comprehensive assessment of an array of individual and contextual factors.”
 - Caldwell & Dickinson, 2009
- Risk assessment and related consequences for an adolescent who has engaged in sexually abusive behavior “must not be” based on the use of a risk assessment instrument alone.
- It must integrate a comprehensive consideration of the adolescent’s severity of offenses and history of psychosocial adversities in order to provide interventions that match individual recidivism risks and needs.
 - Barra et al., 2018



The Comprehensive Nature of the M-CAAP

- The structure of the M-CAAP is designed to provide both comprehensive information upon which to base well-informed discussions of risk, treatment, and placement, and provide structure to the evaluation process itself.
- The evaluator is guided through the M-CAAP in order to gather and describe specific information about each case, on an individualized basis.
- It is unlikely that an evaluator can complete the M-CAAP evaluation, from start to report submission, in less than 17-20 hours, and in many case more, depending on the thoroughness of the written report.



Overview of the MCAAP: Report Outline



- I. Explanatory, Demographic, and Descriptive Information
- II. Presentation and Response to the Assessment Process
- III. Treatment and Placement History
- IV. Family History
- V. Psychosocial History
- VI. History of Sexually Abusive/Troubled Behavior
- VII. Sexual Behavior Risk and Needs Assessment
- VIII. Risk for Sexual Re-offense
- IX. Protective Factors/Mitigators of Risk
- X. Diagnosis
- XI. Summary and Case Formulation
- XII. Recommendations

Overview of the MCAAP: Report Outline: By Section



I. Explanatory, Demographic, and Descriptive Information

- Informants to the Evaluation
- Documents Reviewed for this Evaluation
- Brief Reason for Evaluation
- Legal Guardianship and Custody
- Legal Status
- State Agency Involvement
- Sexual Offender Registry

II. Presentation and Response to the Assessment Process

- Mental Status Exam
- Young person's Level of Participation, Engagement, and Response to Assessment Process



Overview of the MCAAP: Report Outline: By Section



III. Treatment and Placement History

- Placement History/Treatment Type
- Treatment and Diagnostic History
- Relevant Medical History
- Medication History and Current Medication

IV. Family History

- Current Family Arrangement
- General Family History
- Parent Histories
- Sibling Histories
- Family Mental Health/Substance Abuse
- Family Strengths and Vulnerabilities

Overview of the MCAAP: Report Outline: By Section



V. Psychosocial History

- Early Developmental Experiences
- History of Adverse Childhood Experiences/Trauma
- History of Behavioral Problems
- History of Substance Use/Abuse
- Academic History/School Behaviors
- Social/Relational Development
- Prior Psychological Assessments
- Psychiatric Assessment
- Youth Assets and Strengths
- Sexual Development and Non-Offending/Non-Abusive Sexual Interests and Behaviors



Overview of the MCAAP: Report Outline: By Section



VI. History of Sexually Abusive/Troubled Behavior

- Description of the Sexually Problematic Behavior
- Young Person's Description of Sexually Problematic Behavior
- Family Perspective
- Prior Sexual Behavior Risk Assessment

VII. Sexual Behavior Risk and Needs Assessment

- Boilerplate Text: Understanding Assessments of Risk and Needs

VIII. Risk for Sexual Re-offense

IX. Protective Factors/Mitigators of Risk

X. Diagnosis

Overview of the MCAAP: Report Outline: By Section



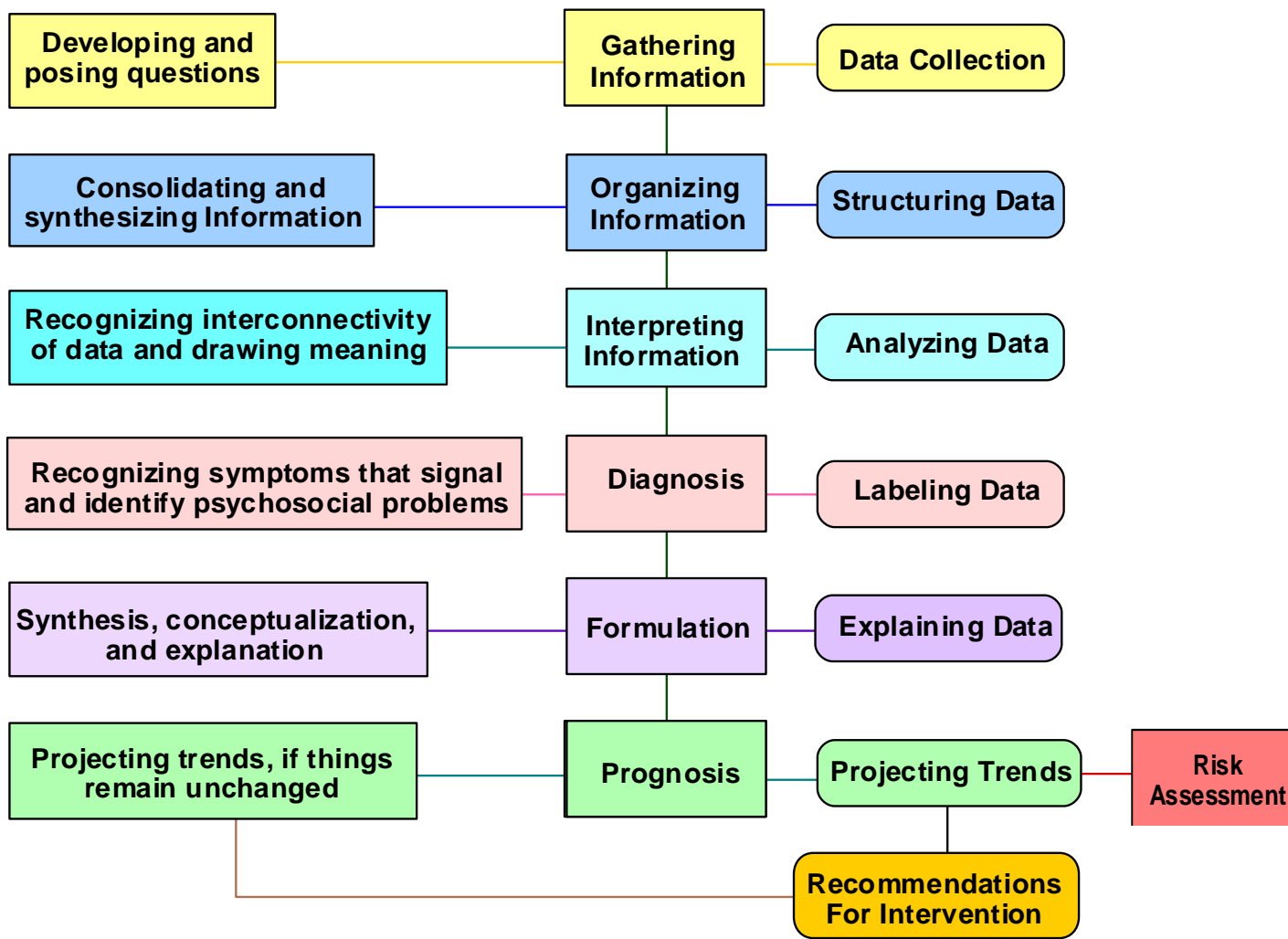
XI. Summary and Case Formulation

- Demonstrate an understanding of the young person's
- Identify key contributors or point to causes for sexually problematic behavior, including possible motivations
- Describe and help explain current psychosocial functioning
- Describe trajectory absent of intervention

XII. Recommendations

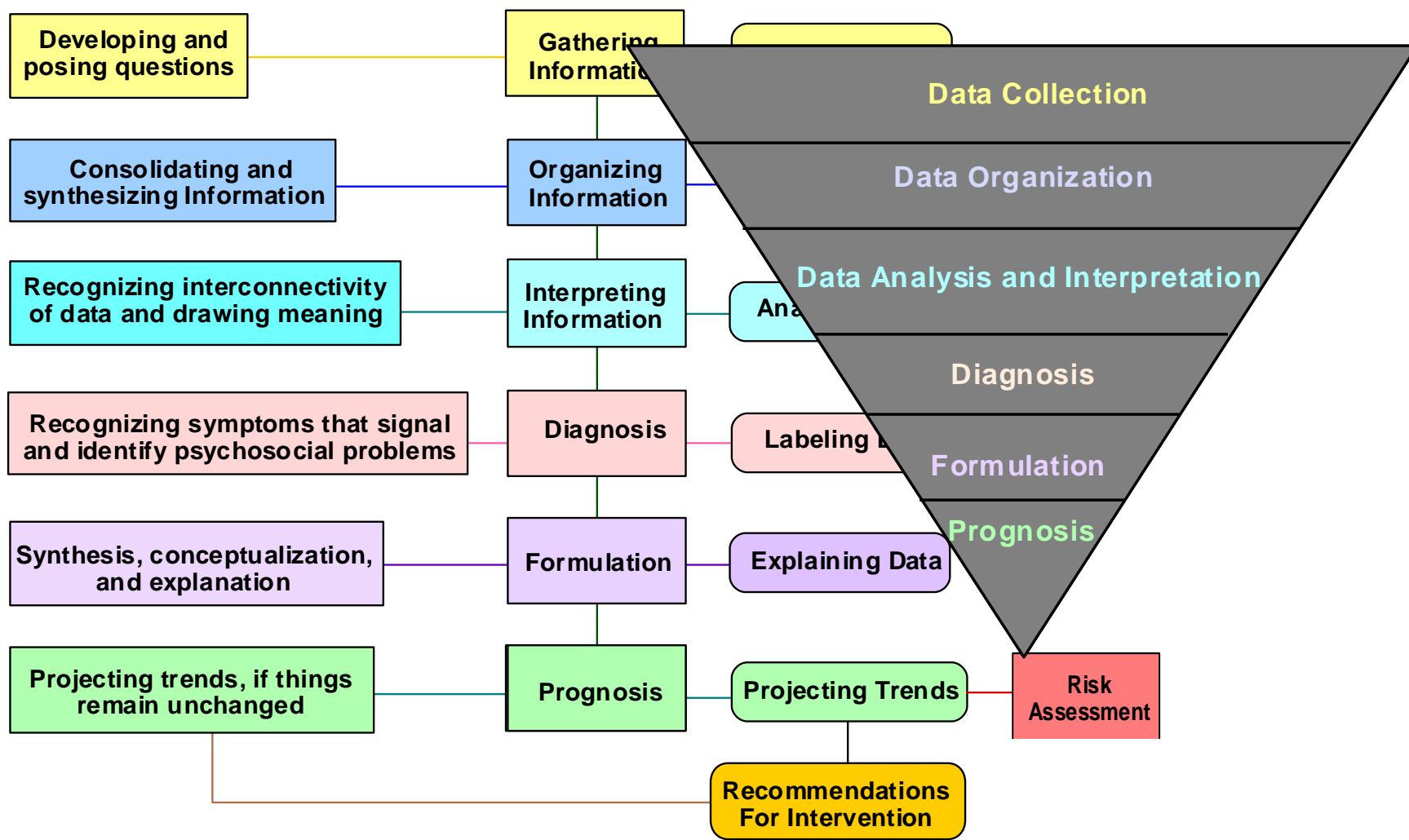
- General Recommendations:
 - Treatment/case management services directed toward specific needs/mitigating risk
 - Further testing/evaluation
 - Treatment/case modalities or services
 - Level of Recommended Supervision

Administering the M-CAAP

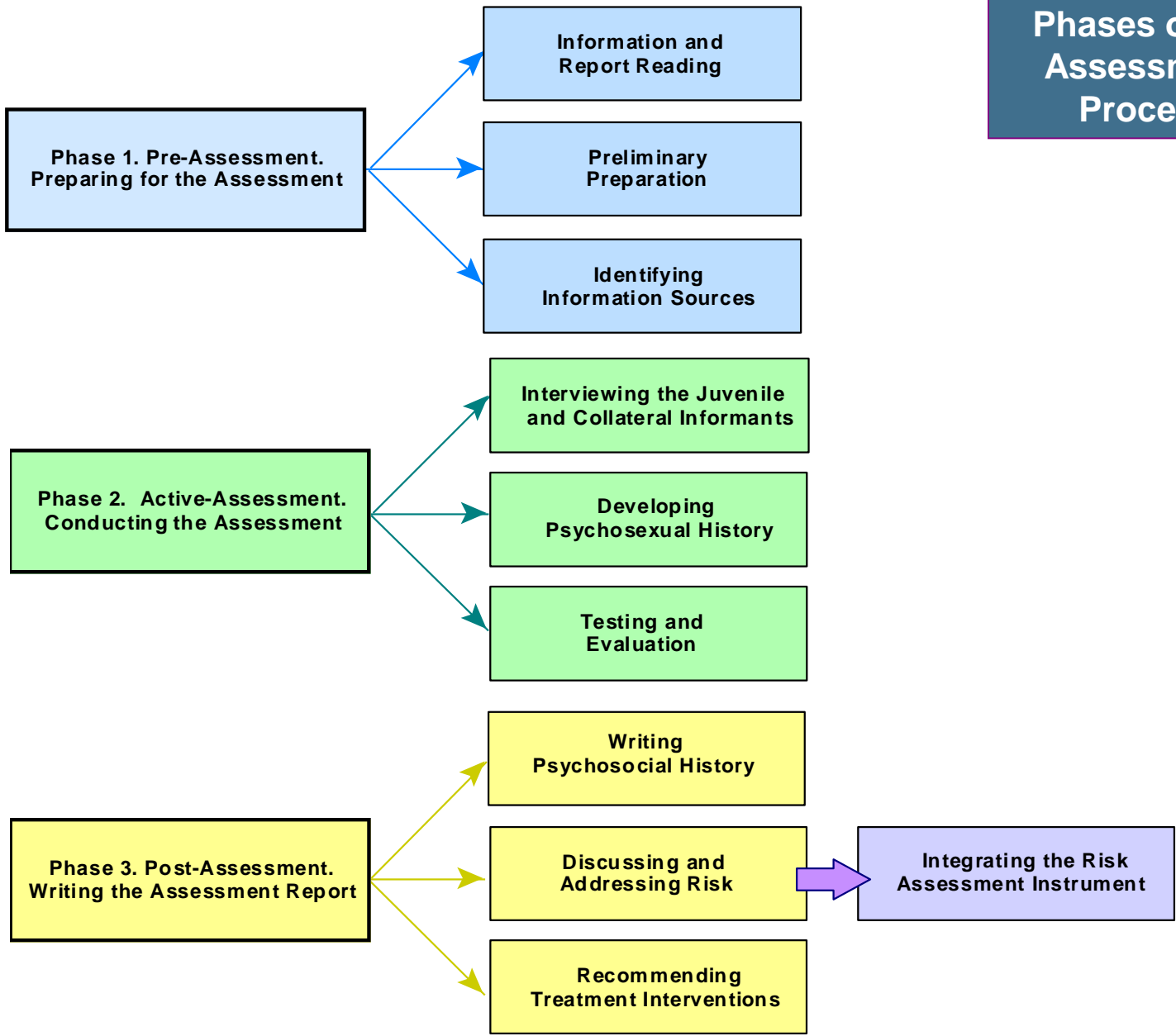


Administering the M-CAAP

The Assessment "Funnel"



Phases of the Assessment Process



The Interactive M-CAAP

- The M-CAAP is available for download as an interactive Microsoft Word document.
- The “boilerplate” text will be locked and cannot be changed or modified by users.
- However, each item and checklist has an interactive open text box, which allows for entry using all word processing features.
- The interactive M-CAAP also has instructions for the evaluator throughout the protocol, which can be seen by evaluators on their computer screens but will not print out or appear in the printed evaluation report.
- However, as instructions are in “hidden text” they must be switched on in order to be visible to the evaluator.



Summary

- The M-CAAP seeks and integrates an understanding of the young person's past sexual behavior and potential risk with an understanding of the “whole” individual and their environment.
- Recommendations include a formulation of the adolescent's individual and developmental needs, as well as the supports and resources necessary to meet those needs.



References

- Barra, S., Bessler, C., Landolt, M. A., & Aebi, M. (2018). Testing the validity of criminal risk assessment tools in sexually abusive youth. *Psychological Assessment, 30*, 1430-1443.
- Caldwell, M. F., & Dickinson, C. (2009). Sex offender registration and recidivism risk in juveniles who commit sexual offenses. *Behavioral Sciences & the Law, 27*, 941-956.

